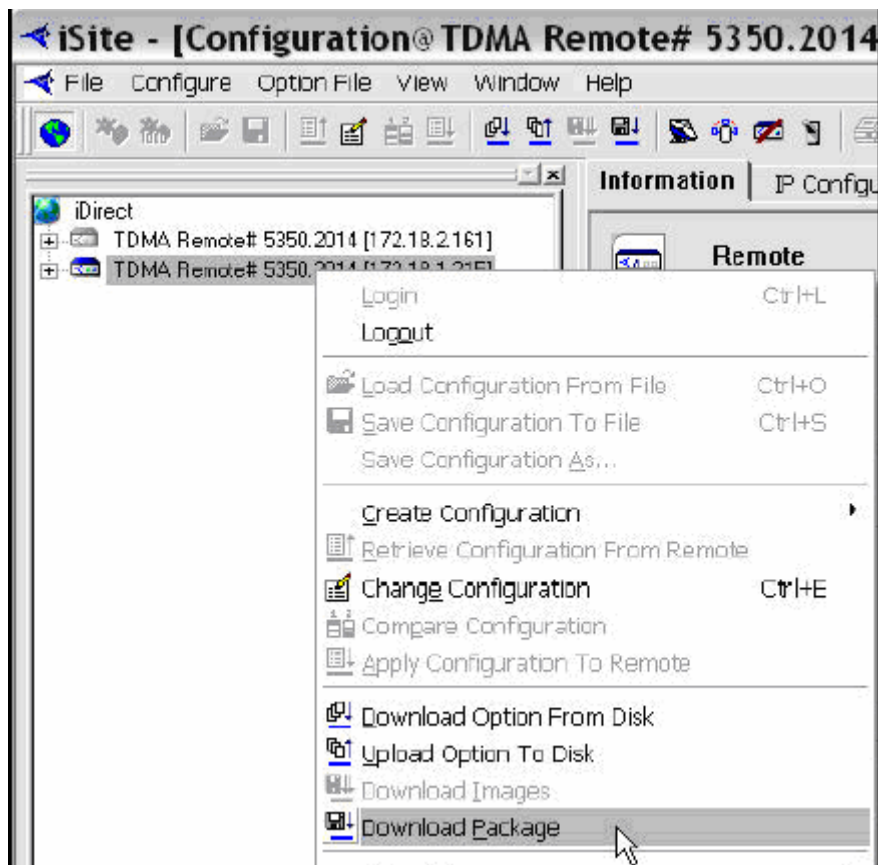
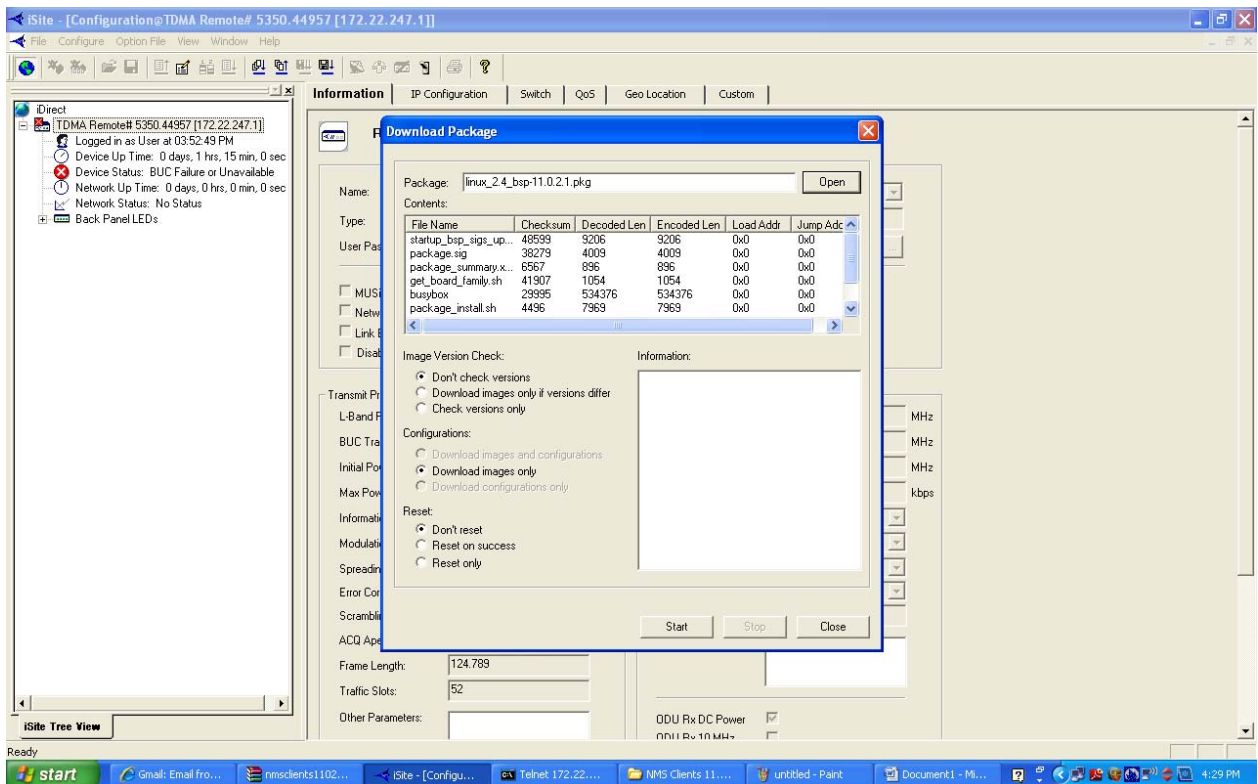
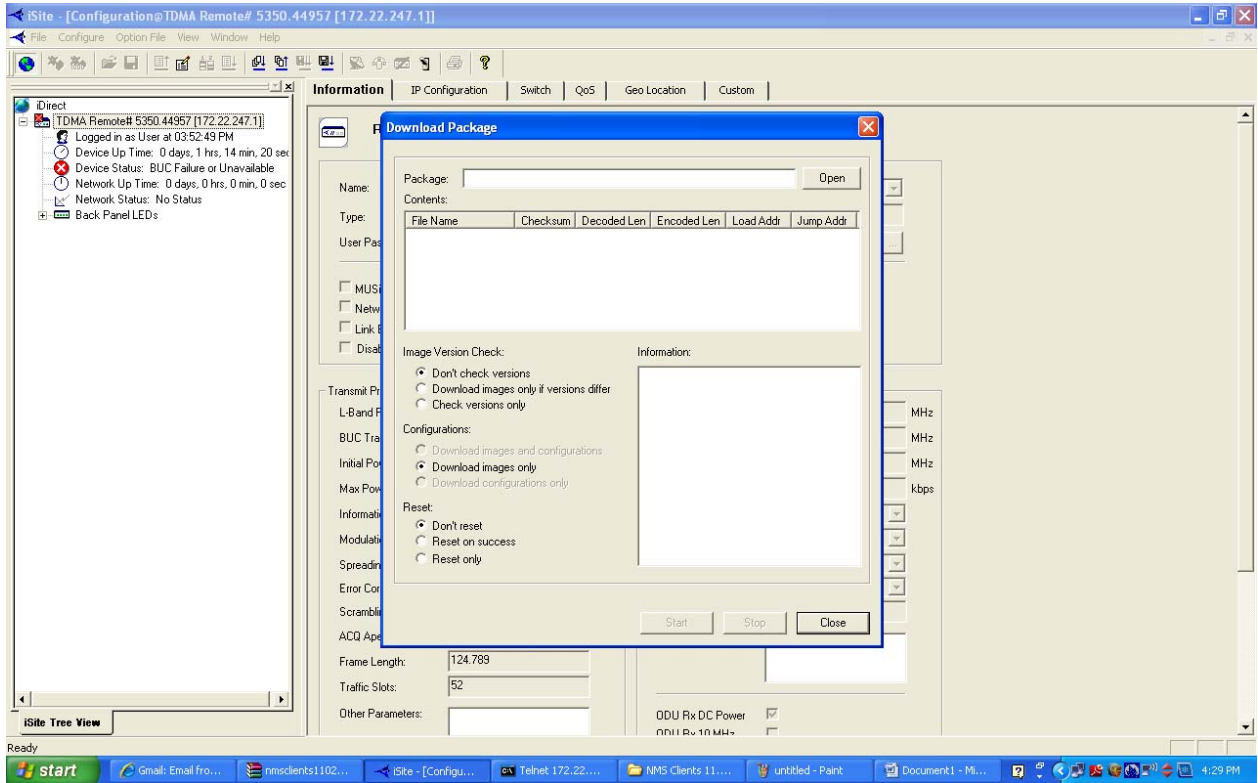


Loading the Linux BSP, Image and option file procedure through iSite

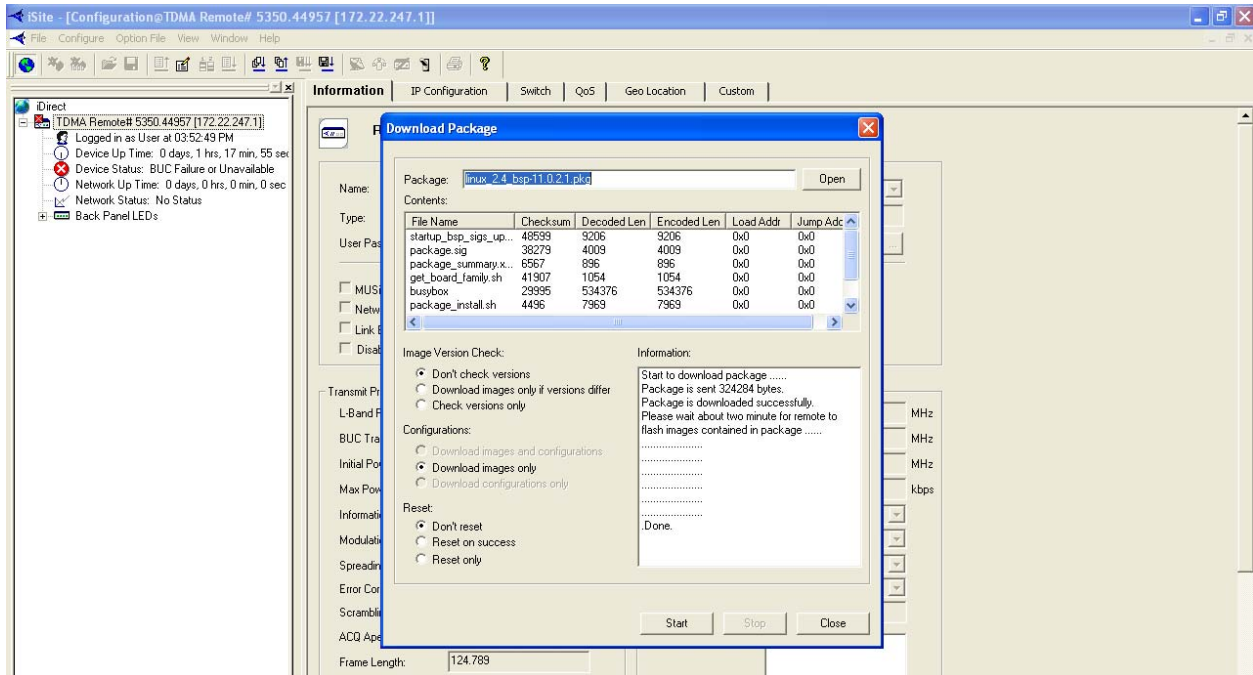
- 1) Use a cross-over-cable to connect the LAN port of the PC to LAN port of the Modem
- 2) From the command prompt Ping the IP address of the modem. You should get the response without any packet loss. If there is any problem check the IP address of the PC and the cable.
- 3) Load the iSite software to the PC and login to the modem by using iSite.
- 4) Open iSite, right-click on the remote and select Download Package.



5) Loading the Linux_bsp package first.

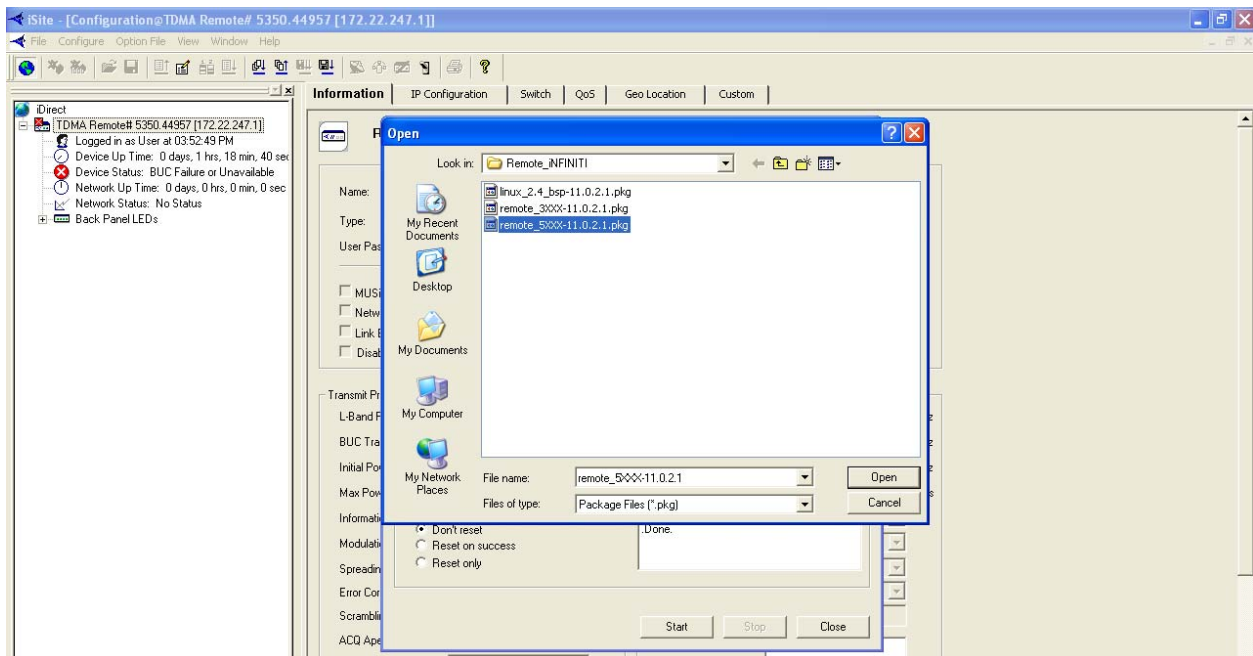


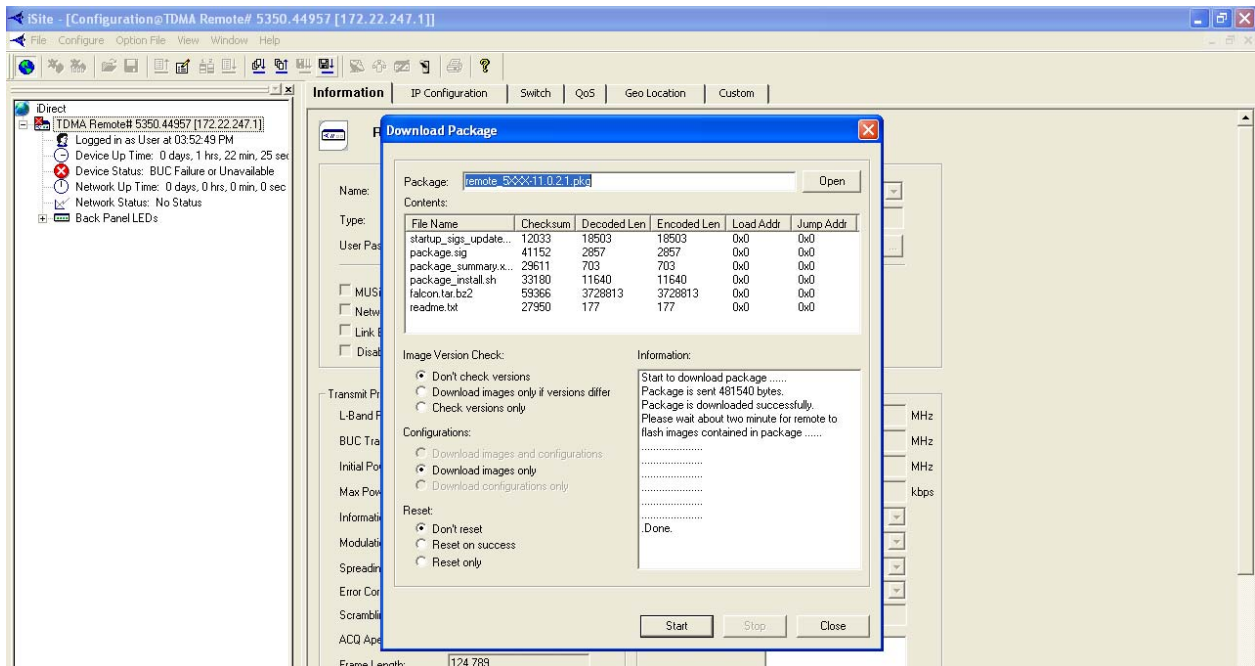
6) Check as above, don't select other options



7) Wait linux package to load until you see above picture (DON'T Restart)

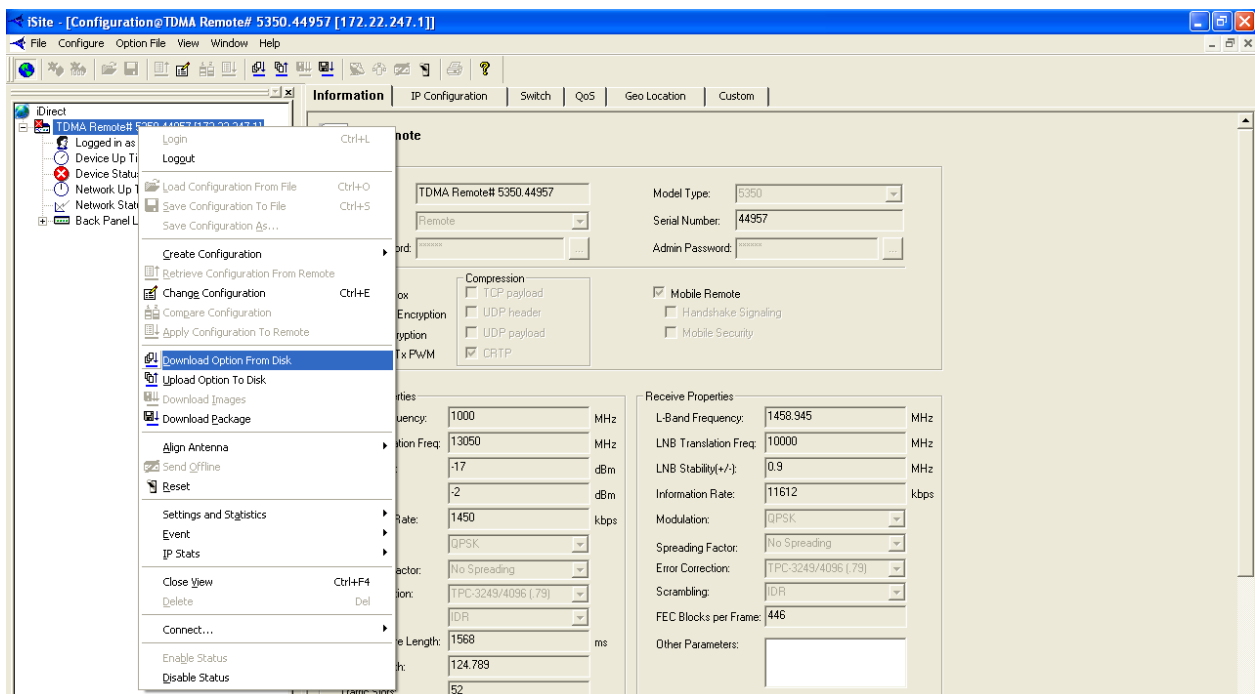
8) Download remote **package-remote_3xxx or 5xxx infinity series** or other Models as per below picture

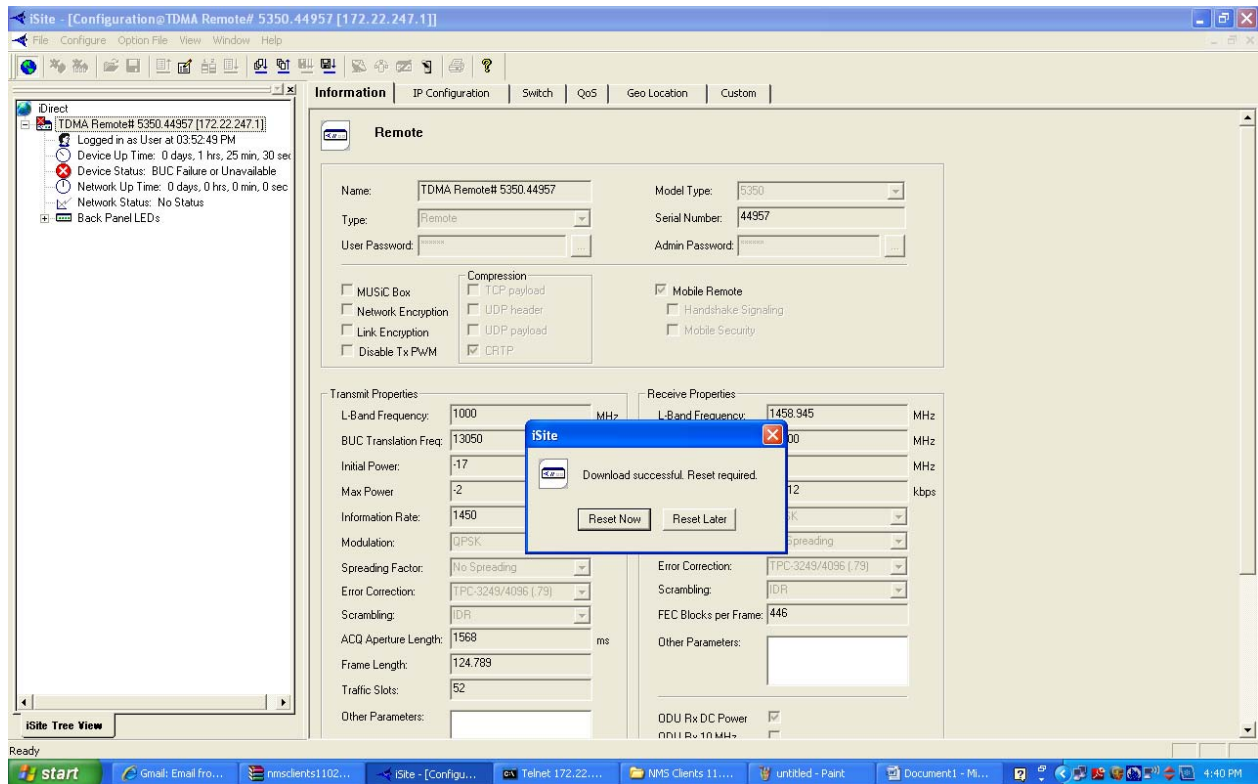




9) Please wait until you see above picture status. **(Do Not Restart unless download the new option file)**

10) Load the correct Option file.





11) Now restart.